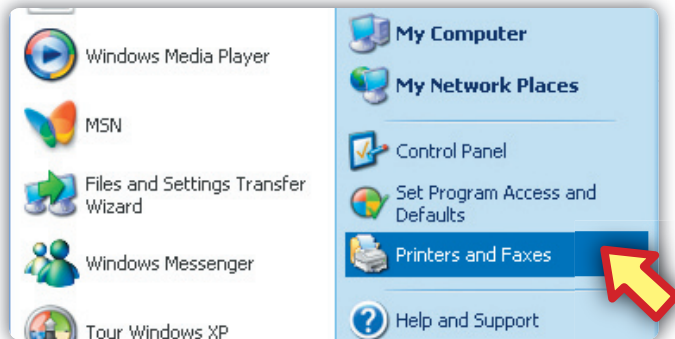
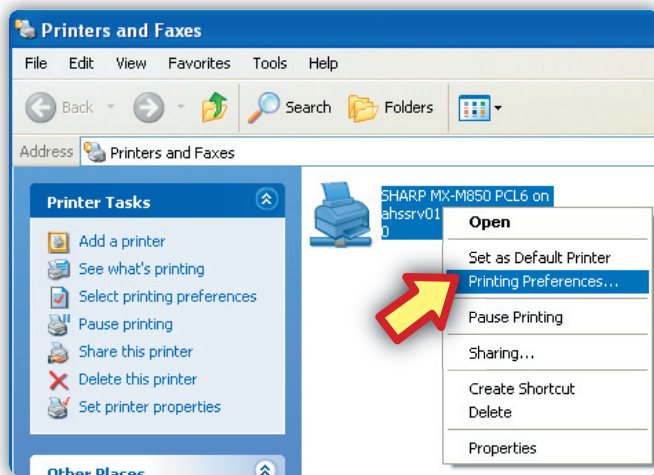


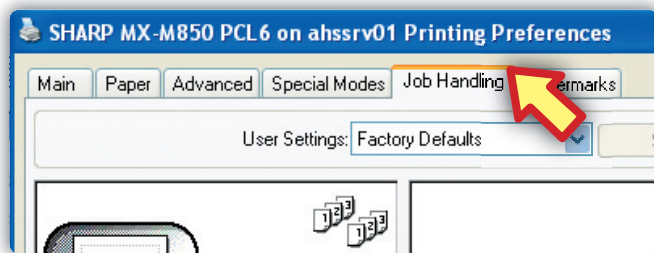
Setting Your Printer Code



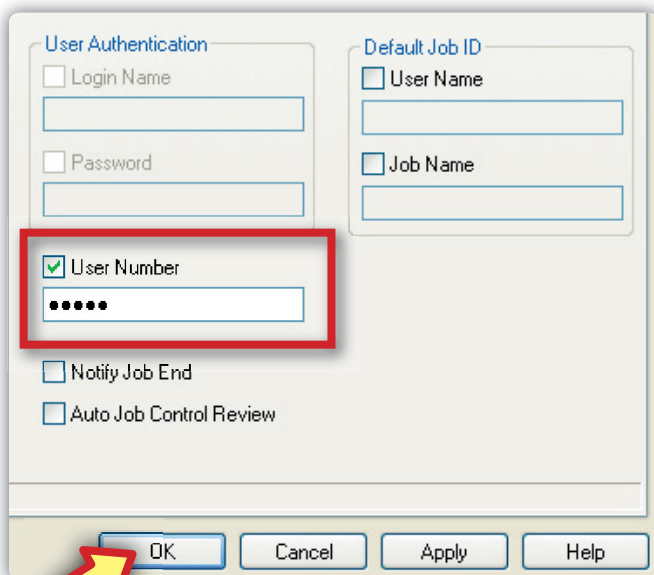
Under the start menu click on **“Printer and Faxes”**



Right click on the **SHARP MX M850** printer.
Then select **“Printing Preferences...”**



In the dialogue box click the fifth tab **“Job Handling”**



Click the box **“User Number.”**
Then **type your printer access code** in the field below.
Hit **“ok”** to save the settings.
Congratulations you did it!